





KEY BLVD FRONTAGE - VIEW UP-HILL TO WEST



WESTERN PROPERTY BOUNDARY ON KEY BLVD - VIEW UP-HILL TO WEST



VIEW NORTH TOWARD PUBLIC ALLEY



KEY BLVD FRONTAGE - VIEW TOWARD N. NASH ST.

KEY BLVD. FRONTAGE



VIEW SOUTH FROM EXISTING DRIVEWAY



EXISTING TRANSFORMERS



EXISTING WALLS AND SLOPE



EXISTING STAIR CONNECTION TO COLONIAL TERRACE

N. NASH STREET FRONTAGE



EXISTING PATH--VIEW DOWN FROM COLONIAL TERRACE



EXISTING PATH--VIEW UP TOWARD COLONIAL TERRACE



BOTTOM OF PATH - VIEW TO WEST



BOTTOM OF PATH - VIEW EAST TOWARD NASH ST.

EXISTING PUBLIC PATH

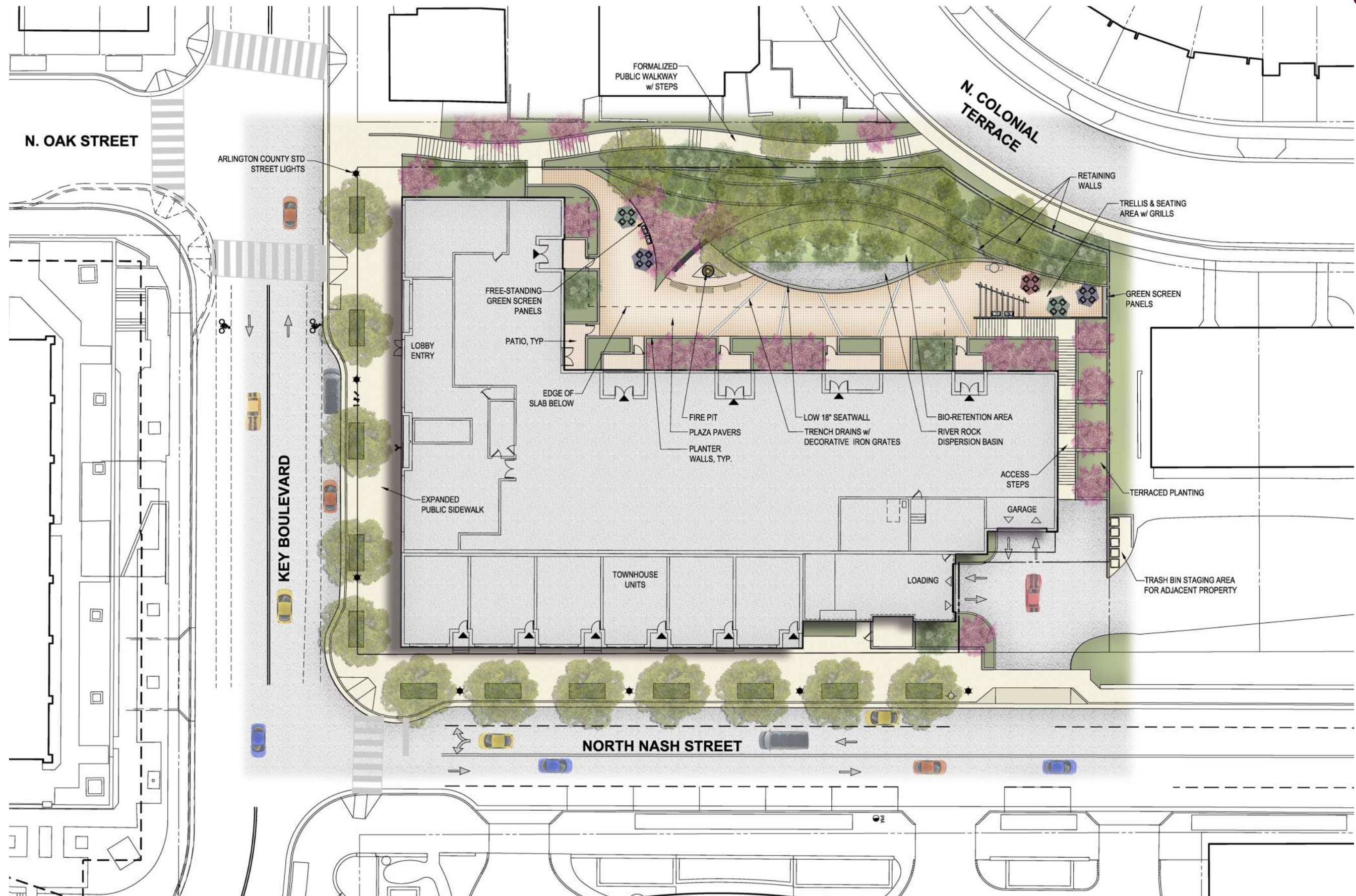




Existing View from North Colonial Terrace

Future View from North Colonial Terrace







1411-1417 Key Blvd
East Elevation

SCALE: 1/16" = 1'-0"



Nash Street

1411-1417 Key Blvd
South Elevation

SCALE: 1/16" = 1'-0"



Nash Street

1411-1417 Key Blvd
North Elevation

SCALE: 1/16" = 1'-0"



1411-1417 Key Blvd
West Elevation

SCALE: 1/16" = 1'-0"







