



B. F. SAUL COMPANY
1700 Lee Highway
Redevelopment Concept



B. F. SAUL COMPANY
1700 Lee Highway
Redevelopment Concept

Extended Stay Hotel

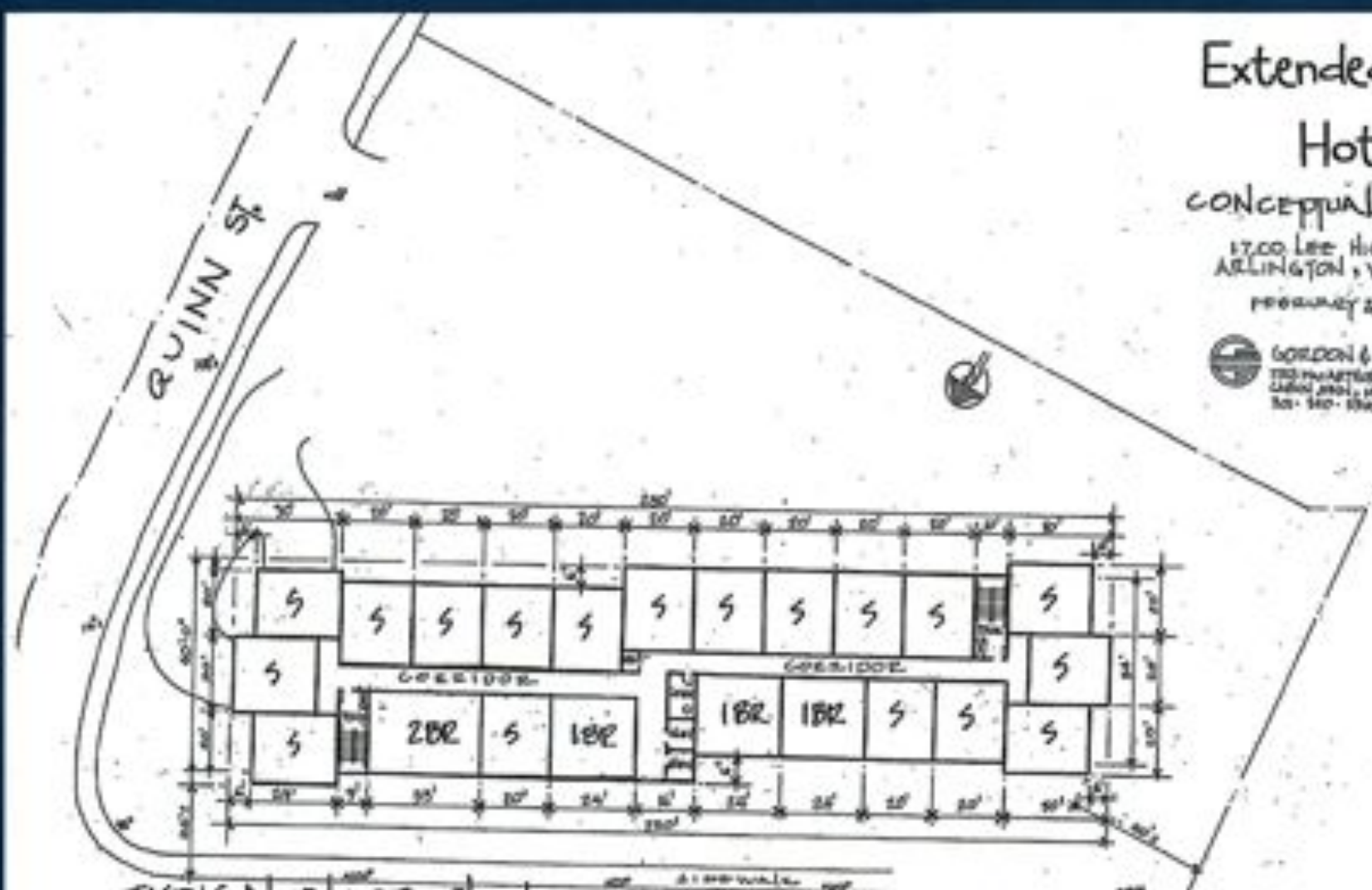
CONCEPTUAL DESIGN

1700 Lee Highway
ARLINGTON, VIRGINIA

February 20, 2011



GORDON & GREENBERG
THE ARCHITECT FIRM
1100 PARKWAY, SUITE 100
ARLINGTON, VA 22202
TEL: 703-520-1500



TYPICAL FLOOR PLAN

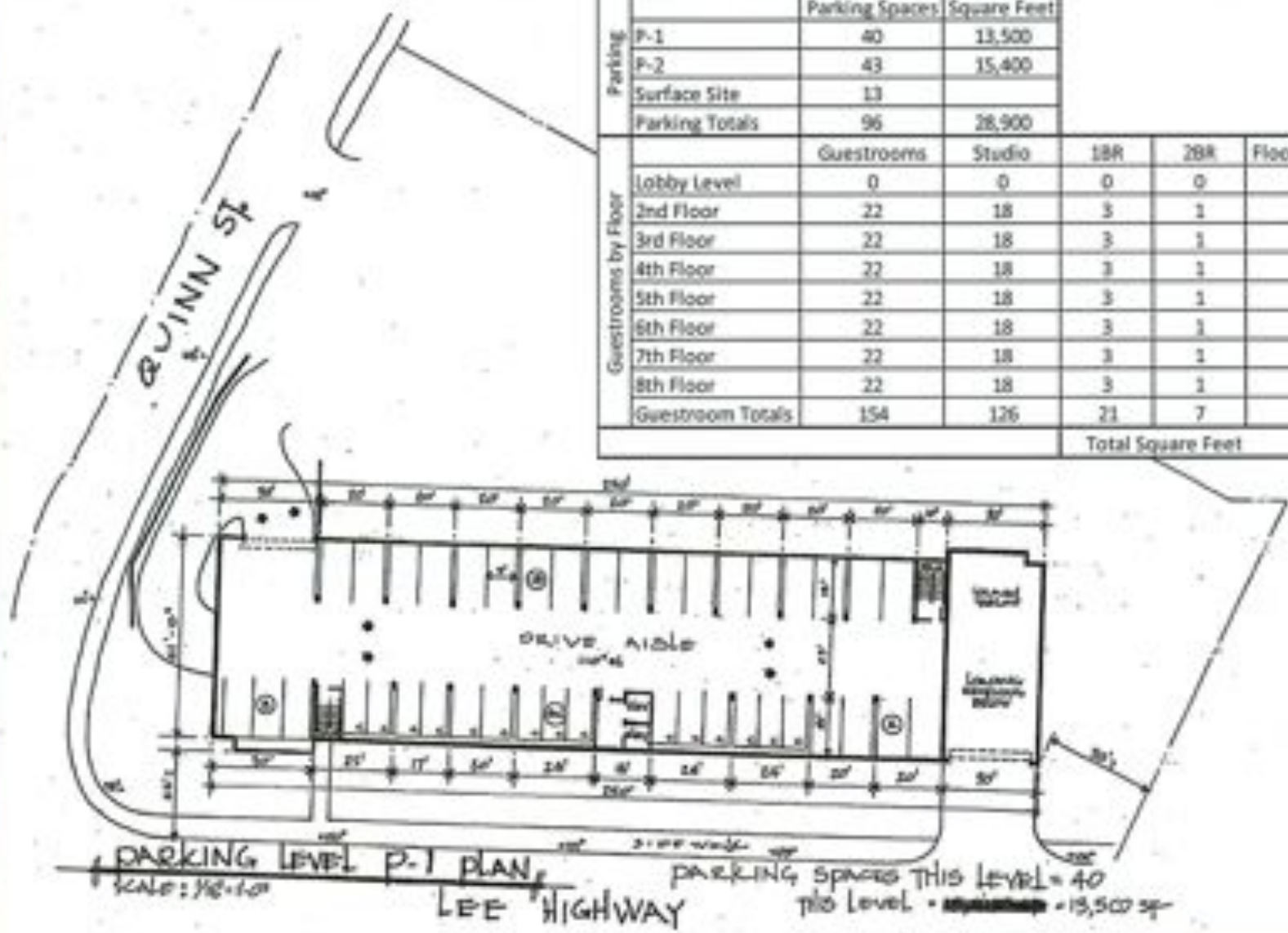
Scale: 1/8" = 1'-0"

LEE HIGHWAY

GUESTROOM COUNT PER FLOOR = 22
TOTAL LEVEL = 13,614 SF

B. F. SAUL COMPANY
1700 Lee Highway
Redevelopment Concept

Tabulation						
Parking		Parking Spaces	Square Feet			
	P-1	40	13,500			
	P-2	43	15,400			
	Surface Site	13				
	Parking Totals	96	28,900			
Guestrooms by Floor		Guestrooms	Studio	1BR	2BR	Floor Square Feet
	Lobby Level	0	0	0	0	15,534
	2nd Floor	22	18	3	1	13,614
	3rd Floor	22	18	3	1	13,614
	4th Floor	22	18	3	1	13,614
	5th Floor	22	18	3	1	13,614
	6th Floor	22	18	3	1	13,614
	7th Floor	22	18	3	1	13,614
	8th Floor	22	18	3	1	13,614
	Guestroom Totals	154	126	21	7	110,832
Total Square Feet					139,732	



B. F. SAUL COMPANY
 1700 Lee Highway
 Redevelopment Concept

About B. F. Saul Company

- In business since 1892
- Track record of successful development projects that reflect goals of community
- Financial capability and long-term outlook: we follow through and build quality
- Wide range of experience: 48 retail centers, 19 hotels, 4,000,000 SF office
- Complete in-house expertise: finance, construction, and management



7501 Wisconsin Avenue
Bethesda



The Hay-Adams
Washington, DC



Clarendon Center North
Clarendon

B. F. SAUL COMPANY
1700 Lee Highway
Redevelopment Concept



Courtyard by Marriott
Tysons Corner



The Kennedy-Warren
Washington, DC



Lyon Place Apartments
Clarendon



Washington Square
Alexandria

B. F. SAUL COMPANY
1700 Lee Highway
Redevelopment Concept
